

Heavy Duty Cable Tray

Standard:

BS EN 61537 Cable Management – cable tray systems and cable ladder systems.

Material and Finishes:

Mild steel pre-galvanised PG. PG Manufactured from pre galvanised mild steel complying with BS EN 10346 with a typical zinc coating of 20µm.

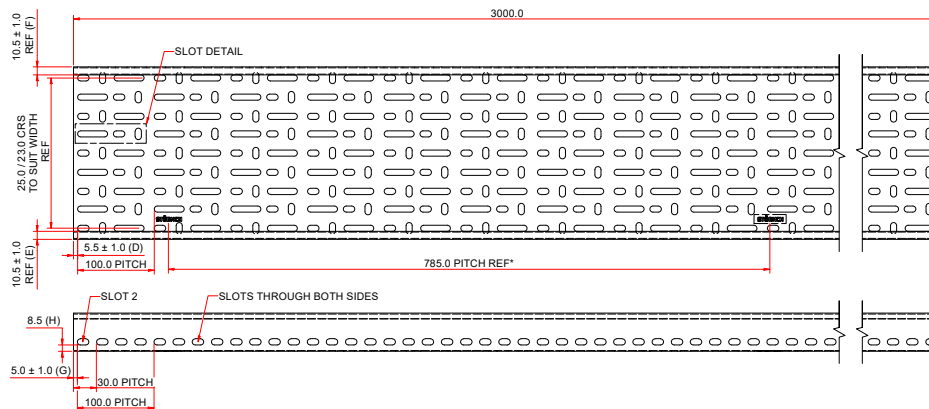
Product information:

Supplied in 3mtr lengths as standard.

STÖRNCH cable tray systems are usually assembled using M6 roofing bolts to a torque setting of 12N/m.

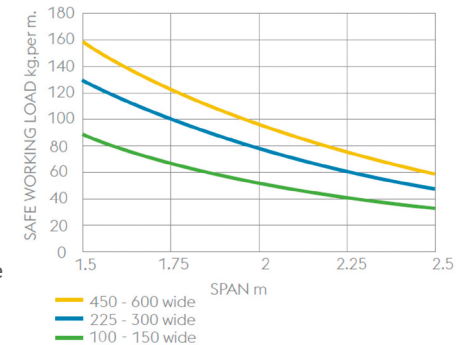


Code	External Depth	Internal Depth	External Width	Internal Width	X-Sectional	Weight Kg/m ²	Gauge mm
GMSHCT100	50	48.2	100	97.6	4704.3	3.9	0.9
GMSHCT150	50	48.2	150	148.2	7143.2	4.7	0.9
GMSHCT225	50	48.2	225	222	10700.4	7.9	1.2
GMSHCT300	50	47.6	300	297	14137.2	9.6	1.2
GMSHCT450	50	47.6	450	447	21277.2	16.1	1.5
GMSHCT600	50	47	600	597	28059.0	20.2	1.5



Loading Graphs

Working loads are represented graphically as shown and are based on the cable tray being continuous over four spans or more. Deflection has been limited to SPAN/200 generally, based on the end span condition as the worst case. Deflection will be less than this on internal spans. However, on wider trays, additional deflection will be induced locally across the base of the tray, depending on the width of the tray and the load distribution across the width. This will not be detrimental to the structural performance of the tray but may need consideration if appearance is of prime importance.



When installing STÖRNCH cable trays, care should be taken to ensure the support is within 600mm of a joint.

The information in this datasheet is intended for reference purposes only and may be modified at any time without prior notice or obligation. All data is provided in good faith and is accurate to the best of our knowledge at the time of release.