

Medium Duty Return Flange 45° Bends Pre Galv

Standard:

BS EN 61537 Cable Management – cable tray systems and cable ladder systems.

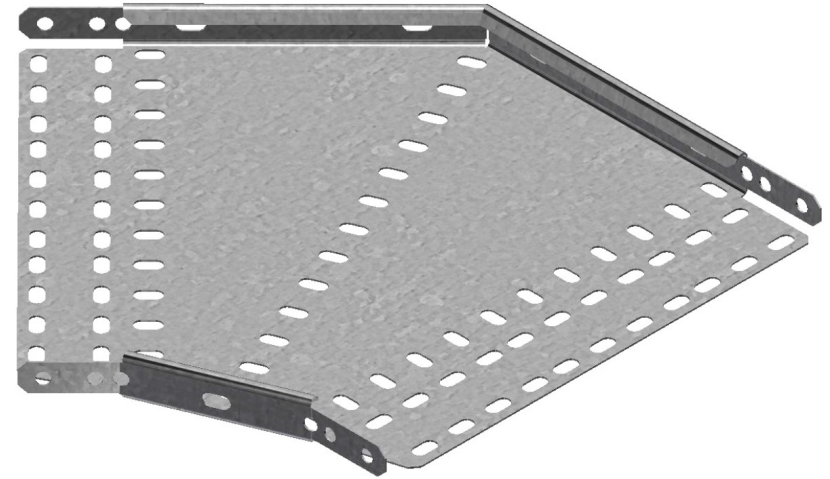
Material and Finishes:

Mild steel pre-galvanised PG.

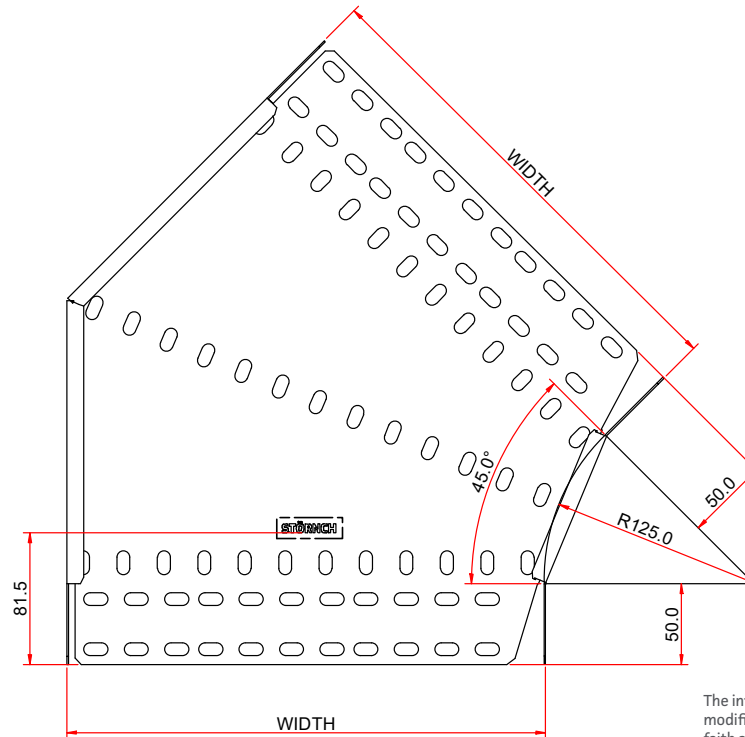
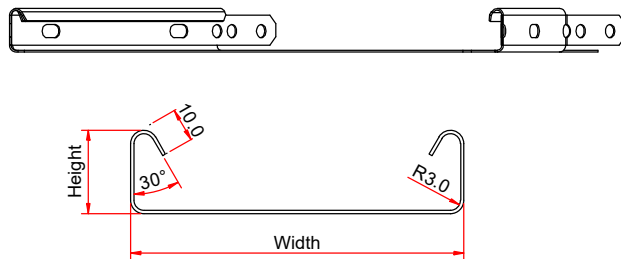
PG Manufactured from pre galvanized mild steel complying with BS EN 10346 with a typical zinc coating of 20µm.

Product information:

STÖRNCH cable tray systems are usually assembled using M6 roofing bolts to a torque setting of 12N/m.



Code	Width mm	Height mm	Gauge mm	Weight Kg
GMSCT45100	100	25.9	0.9	0.26
GMSCT45150	150	25.9	0.9	0.38
GMSCT45225	225	26.0	1.0	0.65
GMSCT45300	300	26.0	1.0	0.92
GMSCT45450	450	26.0	1.0	1.56
GMSCT45600	600	26.2	1.2	2.82



The information in this datasheet is intended for reference purposes only and may be modified at any time without prior notice or obligation. All data is provided in good faith and is accurate to the best of our knowledge at the time of release.