

# Rectangular duct suspension bracket

## GMVBL1-100



### Description

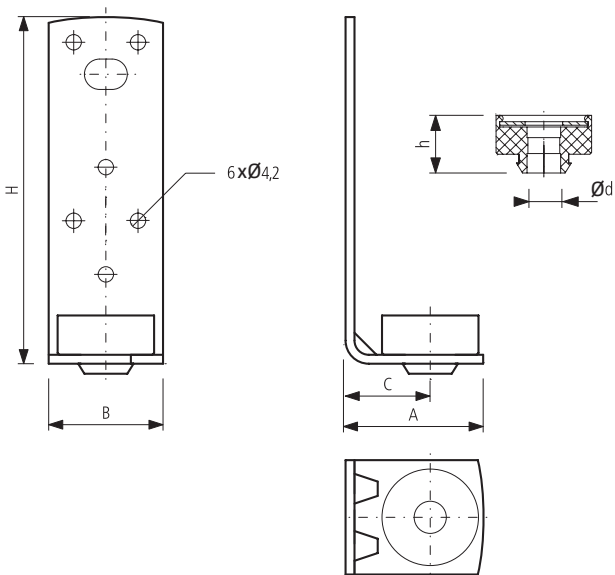
This type of duct suspension bracket is a quick-to-install fastener for square ventilation ducts, especially when the suspension system includes threaded rods and self-drilling screws.

The duct suspension bracket is fastened only to the top side of the duct to reduce the required number of threaded rods.

**Available materials — Product code example**  
GMVBL1-100 — galvanized steel sheet

**Product code example**  
Product code: **GMVBL1-100**  
type \_\_\_\_\_

### Dimensions



A (mm)	B (mm)	C (mm)	H (mm)	h (mm)	Ød (mm)
38	25	23	98	18.7	10

Type	Specific load $F_k$ (kN)	Recommended load $F_z$ (kN)
GMVBL1-100	1.2	0.6

### Installation method

