



# High Flow Tank Pump

The pump is designed to collect condensate water from air conditioning machines and discharge it up to recommended maximum 5 metres head. The internal safety float is a low current switch to stop the air conditioning system in the event of pump failure. The pump is operated from an internal float switch.

**Electrical warning! Isolate before working on this unit**

## SERVICE GUIDE:

Flush the pump through with anti-bacterial wash every six months to avoid sludge build-up in the pump housing.

NB The contractors should satisfy themselves that any chemicals used are compatible with the working of the pump.

## IMPORTANT:

Pump should be filled with water until motor runs, check for leaks and proper discharge of water.

Ensure that there are no kinks or trapped parts in the piping, which must have an inside diameter of 6mm. Fix the pipe with cable ties to the pump outlet.

## IMPORTANT:

The pre-wired safety switch MUST ALWAYS be utilised.

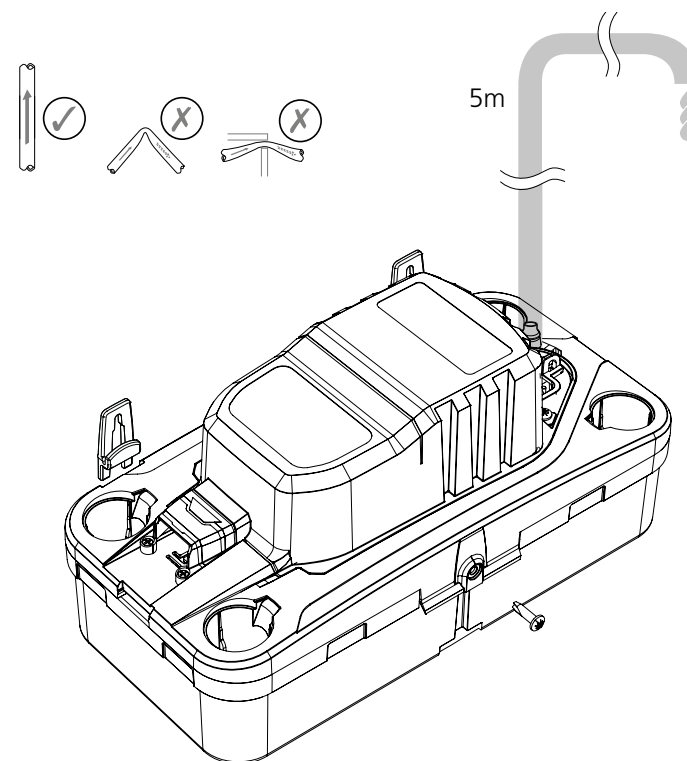
## TECHNICAL SPECIFICATION:

- Non-return valve
- 2 metre connecting cable
- Tank holds 1.7 litres
- Maximum 5 metres discharge head
- Maximum water pumping capacity 300 L/h
- Pump has a pre-wired safety switch
- Safety switch: 3A maximum
- Pump rating 0.8A, 230 VAC
- Max. water temp: 40°C/104°F
- pH: Neutral
- Noise level: 49 dB(A) @ 1m

## DIMENSIONS:

Height: 138mm Width: 285mm

Depth: 144mm Weight: 1.65kg



The information in this datasheet is intended for reference purposes only and may be modified at any time without prior notice or obligation. All data is provided in good faith and is accurate to the best of our knowledge at the time of release.



# High Flow Tank Pump

## INSTALLATION NOTES:

This pump is designed to sit level on its base or be fitted level to a vertical surface.

## IMPORTANT

This appliance should ONLY be fitted and serviced by a competent & qualified HVAC/R installer.

2 This appliance must be provided with means for disconnection that is incorporated into the fixed wiring in accordance with the relevant local wiring regulations.

3 If the supply cord is damaged the pump should be replaced.

4 This appliance is not intended for use by persons (including children) with reduced physical, sensory or mental capabilities, or lack of experience and knowledge, unless they have been given supervision or instruction concerning use of the appliance by a person responsible for their safety.

5 THIS APPLIANCE MUST BE EARTHED.

## ELECTRICAL CONNECTIONS:

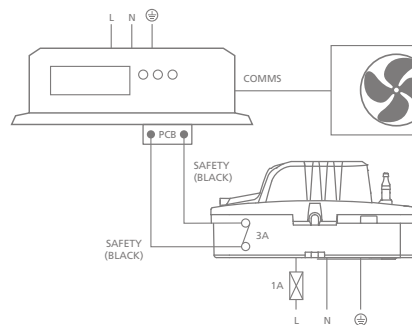
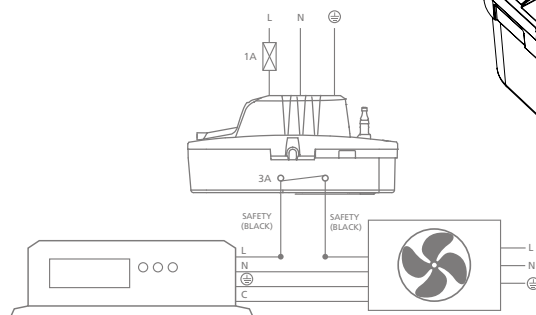
Brown: Live

Blue: Neutral

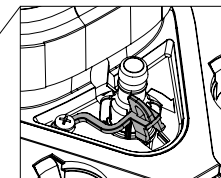
Green/yellow: Earth

Black: N/C

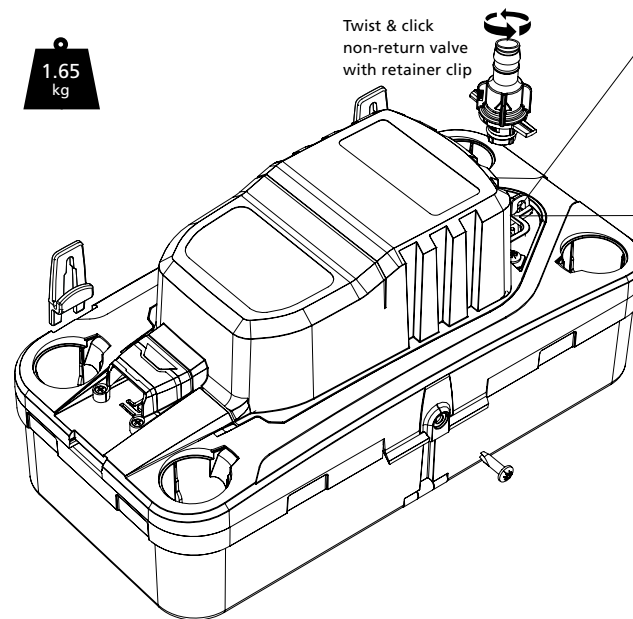
Black: Common



Twist & click  
non-return valve  
with retainer clip



Retainer clip



The information in this datasheet is intended for reference purposes only and may be modified at any time without prior notice or obligation. All data is provided in good faith and is accurate to the best of our knowledge at the time of release.



# High Flow Tank Pump

## IMPORTANT

1 This pump has been designed for the removal of pH neutral air conditioner condensate water ONLY.

2 Confirm condensate production of indoor evaporating coil is within capacity of condensate pump.

3 Ensure 1 Amp fuse is installed.

4 Following installation of the pump the tank should be filled with water until the motor runs. Pipes and connections should be checked for leaks and discharge of water checked.

The operation of the safety switch should also be checked.

5 Do not use these pumps in oily or very dusty environments.

6 Install hose and wiring in accordance with manufacturers instructions.

Do not use discharge hose larger than 3/8"/10mm I.D.

7 Inspect pump, clean floats, and tank regularly checking for correct operation.

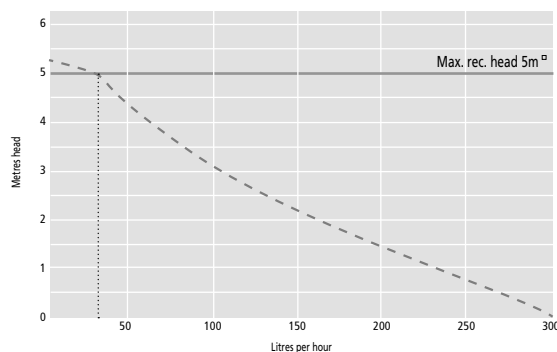
8 Do not operate this pump when any unapproved cleaning chemicals are present in the condensate drainage system. Operating the pump when unapproved or poorly mixed cleaning chemicals are present will result in permanent damage to pump and void warranty. Ensure all cleaning chemicals are thoroughly flushed out of the pump with clean water.

9 After initial installation and/or maintenance, do not leave site until pump has been tested for correct operation.

10 Check for any construction debris that has entered the evaporator coil and/or drain pan prior to initial activation of pump – this will damage the pump permanently.

11 NOISE: Tank pumps operate quietly, however under certain conditions where an extremely low ambient noise level is present, the sound of their intermittent operation may still be perceived as noisy. Always confirm acceptable noise level before installing any condensate pump in a bedroom or other noise sensitive area.

## Performance:



## CORRECT SEQUENCE OF OPERATION:

1 AC unit drain pan fills with water which flows into pumps tank.

2 When the water lifts the float to the correct level the pump will activate.

## FAULT CONDITIONS:

In the unlikely event of a pump failure check the following:

1 Power supply: Ensure power is supplied to pump.

2 Hi level safety switch: Ensure hi level safety switch has not operated. If it has, check pump performance is suited to incoming flow rate.

3 Pump is loud: Pump fixing may be loose or the connected cables and hoses may be vibrating against a hard surface.

4 Outlet Pipe: Check pipe, and outlet barb are not blocked with debris or kinked.



The information in this datasheet is intended for reference purposes only and may be modified at any time without prior notice or obligation. All data is provided in good faith and is accurate to the best of our knowledge at the time of release.